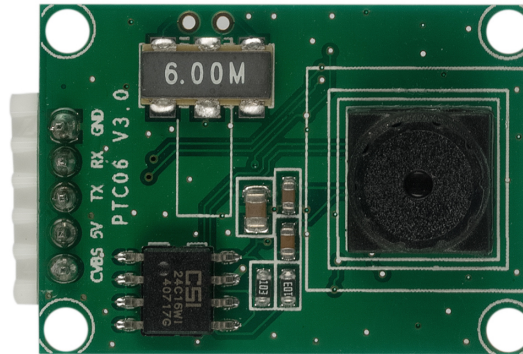


SC03MPE

Spinel 300K Pixels Serial JPEG Color Camera Module

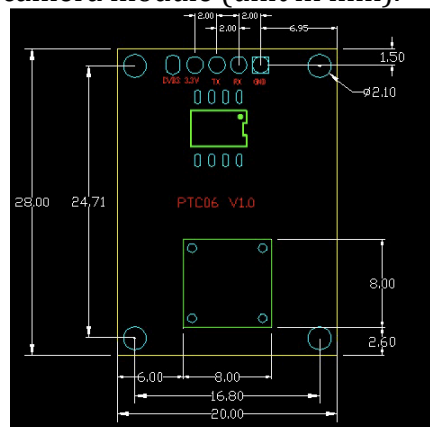


Spinel SC03MPE Camera is a highly integrated serial JPEG camera module which can be attached to any host system that requires a JPEG compressed still camera for embedded imaging applications. The module uses a 1/4" CMOS color image sensor along with a JPEG compression chip that provides a low cost and low powered camera system. The module has an on-board serial interface TTL that is suitable for a direct connection to any host microcontroller UART or a PC system COM port.

The SC03MPE camera is capable of outputting **JPEG format images** and NTSC video.

The SC03MPE camera module comes in a compact form factor with a built in lens and a 5 pin PH 2.0 connector that provides easy access to both power and serial data. PC test tool is provided for easy testing.

Below is the layout of the camera module (unit in mm).



For more information relating to JPEG cameras, please contact us, via email at info@jpegcamera.com
Or by phone at 800-837-5859; or visit our Website: www.jpegcamera.com

SC03MPE Features

300K Pixels resolution

VC0706 protocol

Miniature size of 28mm x 20mm

Specifications	
Image Device	1/4" CMOS OV7725
Serial Output	TTL
Pixels	300K Pixels
Image Resolution	640 x480 (VGA) (Default), 320 x 240 (QVGA), 160x120
Image Compression	JPEG
Video Output	Default NTSC, can be customized as PAL
Baud Rate	115200bps (Default), 9600/38400/19200/57600bps optional
Focal Length	4.3 mm (default)
Angel of View	70° (Default)
Minimum Illumination	1 LUX
IR Illuminator	Not available
IR-Cut filter (IR filter)	Default at 650nm
IR-Cut filter Switcher	Not available
Power Supply	5V DC (default)(Min: 3.3V, Max: 6V)
Current Consumption	Typical: 75mA
Night Image	Black and white
Night Vision Range	5 meters (16ft)
Protocol	VC0706
Exposure	Auto
White Balance	Auto
Auto Gain Control	Auto
Cable Length	20CM (7.8in) 5 pin wires (Default), other length per request
Pin Configuration	Pin 1: Video, Pin 2: VCC, Pin 3: TX, Pin 4: RX, Pin 5: GND
Connector	Default 5 bare wires, other connectors can be customized per request
Waterproof	Subject to the housing/enclosure
Environmental	
Operating Temp.	-4°F~140°F (-20°C~+60°C)
Storage Temp.	-22°F~158°F (-30°C~+70°C)
Dimension in Millimeters	28mm (L) x 20mm (W) x 12mm (H)
Dimension in inches	1.1 Inch (L) x 0.79 inch (W) x 0.47 inch (H)
Weight	Approx. 3 Grams or 0.1 oz

For more information relating to JPEG cameras, please contact us, via email at info@jpegcamera.com
Or by phone at 800-837-5859; or visit our Website: www.jpegcamera.com