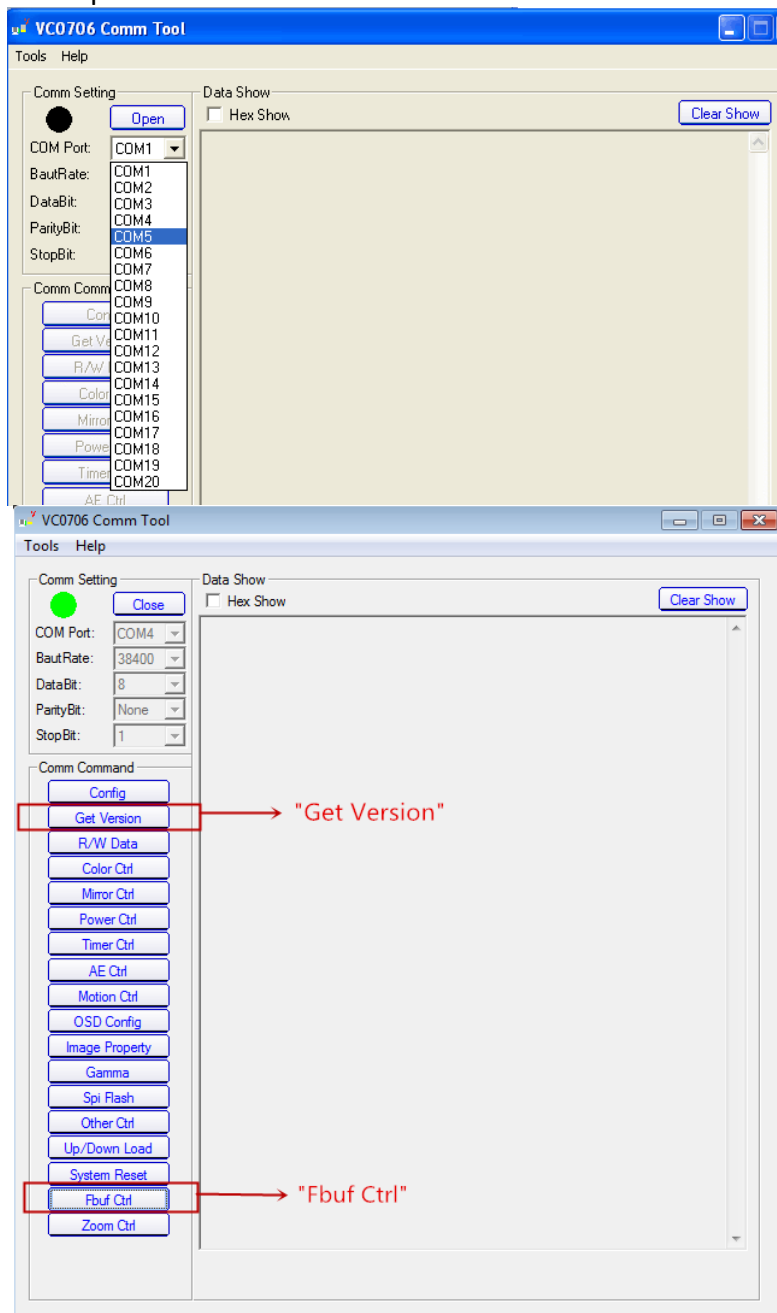


VC0706 CommTool Instruction

To use the CommTool, a windows utility only, you need to set up a serial link to the camera. Here we are only going to explain how to use an FTDI or PL2303 USB/TTL serial converter, you can find lots of information about how to use Arduino on other websites. The VC0706 CommTool can be used to take images for 300K pixels serial JPEG cameras that come with VC0706 protocol.

Step 1: Download and install the VC0706 CommTool software (You may download this software from: <http://www.jpegcamera.com>)

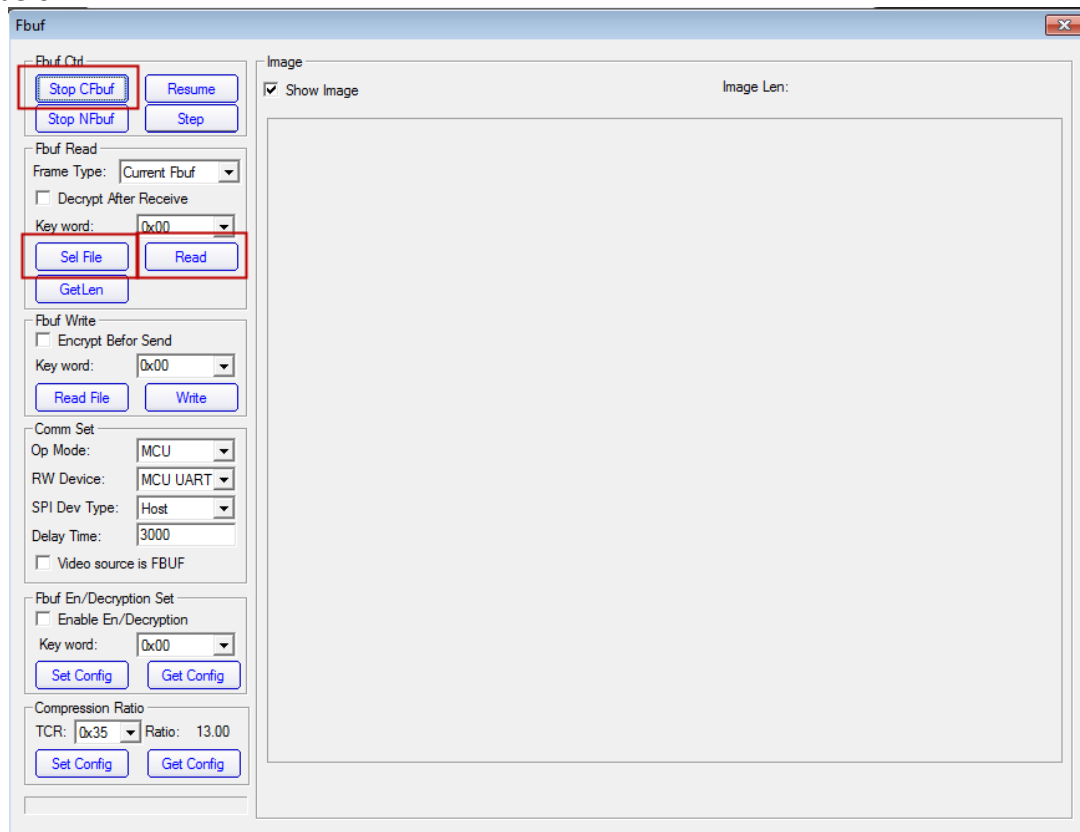
Step 2: Start up the software and select the COM port that the camera is connected to. Then **Open** the port and click **Get Version**





Note if you get the version like above, it means serial port is set up properly, if you get a “Cmd time out” error, you will need to check the serial connection.

Step 3: Click “FBUF CTRL” near the bottom, you will get a panel like the screenshot below.

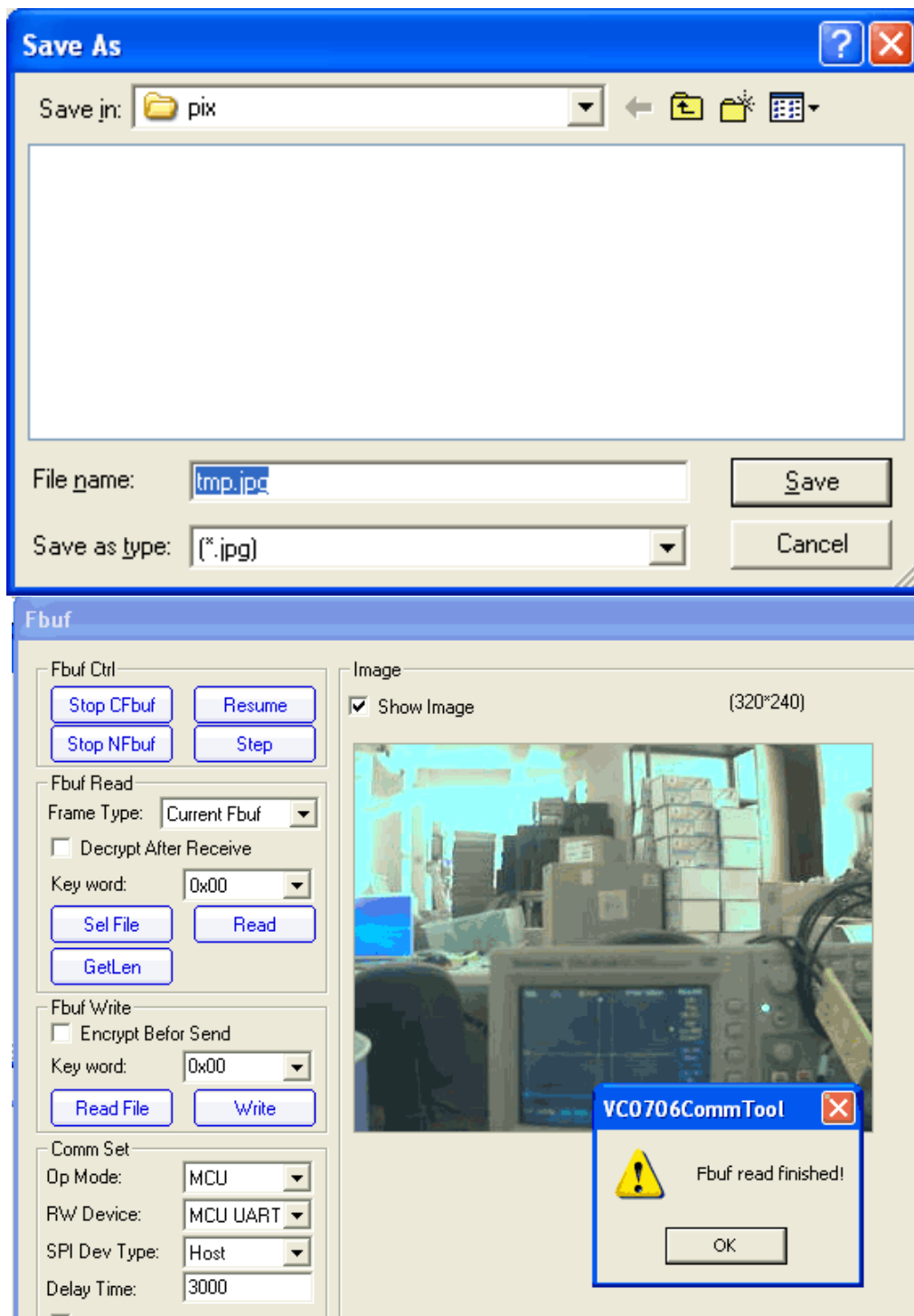


This panel can be used to get images directly from the camera which is good for debugging. First point the camera at something you want to take a photo of, then:

Step 3.1: Click **Stop FBuf** to freeze the frame buffer

Step 3.2: Click **Sel File** to select the file to save the JPG as

Step 3.3: Press **Read** (next to **Sel File**) to read the jpeg image off the camera.



That's it! You can now easily test reading camera images.

To take another photo, first press **Resume** up at the top to have the camera start up again. Then **repeat step 3.1, step 3.2 and step 3.3** to snap another photo.

Finally you can select the **Compression Ratio** which will improve or degrade the image quality but also change the image transfer time.

Note: Changing baud rate is not recommended to do through this software but to issue command via serial port as shown in camera's user manual. Do not use other options for this software due to compatible limits.

For questions regarding this instruction, please email to info@jpegcamera.com