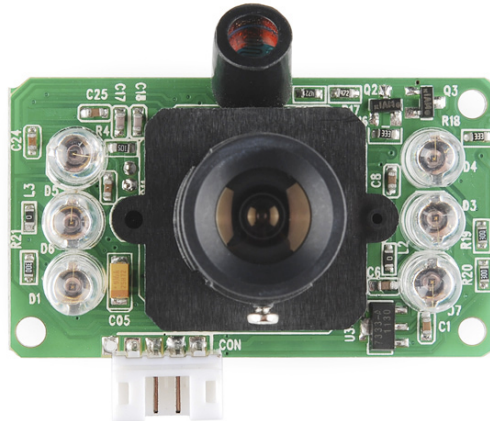


SC03MPC

Spinel 300K Pixels Infrared Serial JPEG Color Camera Module

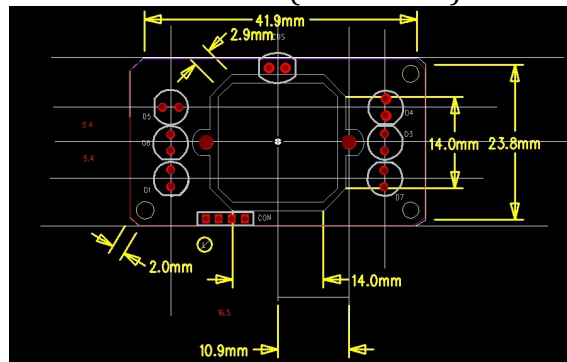


Spinel SC03MPC Camera is a highly integrated serial JPEG camera module which can be attached to any host system that requires a JPEG compressed still camera for embedded imaging applications. The module uses a 1/4" CMOS color image sensor along with a JPEG compression chip that provides a low cost and low powered camera system. The module has an on-board serial interface (TTL/RS232/RS485) that is suitable for a direct connection to any host microcontroller UART or a PC system COM port. SC03MPC is an upgraded design of SC03MPA which has **built-in infrared LED's** on board for IR illuminations.

The SC03MPC camera is capable of outputting **JPEG format images** only.

The SC03MPC camera module comes in a compact form factor with a built in lens and a 4 pin PH 2.0 connector that provides easy access to both power and serial data. PC test tool is provided for easy testing.

Below is the layout of the camera module (unit in mm).



For more information relating to JPEG cameras, please contact us, via email at info@jpegcamera.com
Or by phone at 800-837-5859; or visit our Website: www.jpegcamera.com

SC03MPC Features

300K Pixels resolution

VC0706 protocol

6 built-in 850nm IR LED's

Specifications	
Image Device	1/4" CMOS MT9V011
Serial Output	TTL/RS232/RS485
Pixels	300K Pixels
Image Resolution	640 x480 (VGA), 320 x 240 (QVGA) (Default), 160x120
Image Compression	JPEG
Video Output	Not available
Baud Rate	38400bps (Default), 9600/19200/57600/115200bps optional
Focal Length	3.6 mm (default), 1.7mm/2.0mm/2.8mm/6.0mm/8.0mm/12mm/16mm available
Angel of View	90° (Default), 170°/150°/120°/60°/45°/30°/15° available
Minimum Illumination	1 LUX
LED Illuminator	6 built-in 850nm infrared LED's on-board
IR-Cut filter (IR filter)	Default at 850nm, custom options at 940nm
IR-Cut filter Switcher	Not available
Power Supply	5V DC (default), custom option 12V DC
Current Consumption	Typical: 80mA, Max: 100mA (when LED's are on)
Night Image	Black and white
Night Vision Range	10 meters (33ft)
Protocol	Compatible with VC0706
Exposure	Auto
White Balance	Auto
Auto Gain Control	Auto
Cable Length	20CM (7.8in) 4 pin wires (Default), other length per request
Pin Configuration	Pin 1: RX, Pin 2: TX, Pin 3: GND, Pin 4: VCC
Connector	Default 4 bare wires, other connectors can be customized per request
Waterproof	Subject to the housing/enclosure
Environmental	
Operating Temp.	-4°F~140°F (-20°C~+60°C)
Storage Temp.	-22°F~158°F (-30°C~+70°C)
Dimension in Millimeters	45.6mm (L) x 30mm (W) x 28mm (H)
Dimension in inches	1.8 Inch (L) x 1.18 inch (W) x 1.1 inch (H)
Weight	Approx. 12 Grams or 0.4 oz

For more information relating to JPEG cameras, please contact us, via email at info@jpegcamera.com
Or by phone at 800-837-5859; or visit our Website: www.jpegcamera.com